

# GRIP KOPPELINGEN

## *GRIP COUPLINGS*



**JB Hydraulics BV**

Sportlaan 201

3364 DK Sliedrecht

t +31 (0)88 40 40 500

info@jb-hydraulics.nl

www.jb-hydraulics.nl

## LET OP!

DEZE DOCUMENTATIE IS AFKOMSTIG VAN  
ONZE LEVERANCIER / PRODUCENT.

EVENTUELE BESTELCODES IN DEZE  
DOCUMENTATIE KOMEN NIET OVEREEN MET  
DIE VAN JB HYDRAULICS BV.

HEEFT U VRAGEN?  
NEEM DAN GERUST CONTACT MET ONS OP.  
WIJ ZIJN U GRAAG VAN DIENST!

---

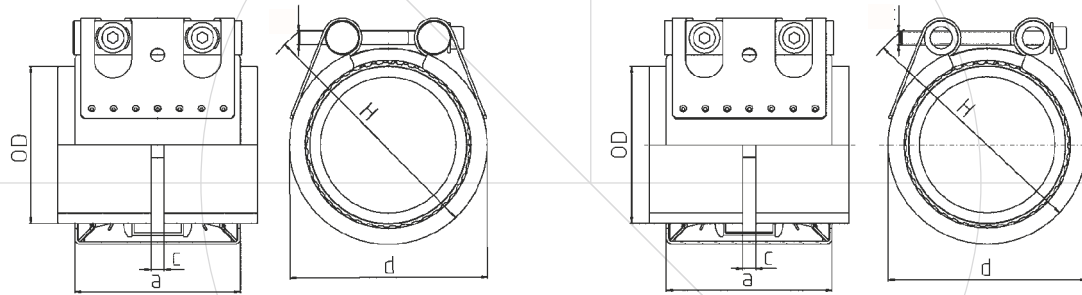
## ATTENTION!

THIS DOCUMENTATION IS PROVIDED  
BY OUR SUPPLIER / PRODUCER.

POSSIBLE ORDERING CODES IN THIS  
DOCUMENTATION DO NOT MATCH THE  
CODES FROM JB HYDRAULICS BV.

IF YOU HAVE ANY QUESTIONS?  
PLEASE FEEL FREE TO CONTACT US.  
WE ARE PLEASED TO HELP YOU!

# NORMACONNECT® GRIP/GRIP E



NORMACONNECT® GRIP

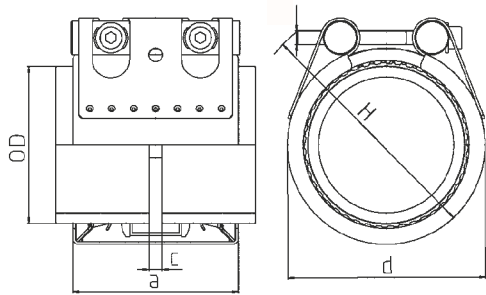
NORMACONNECT® GRIP E

OD (mm)	Clamping range		PN <sup>1)</sup> (bar)	WP <sup>2)</sup> (bar)	C <sub>max</sub> (mm)	Dimensions		
	ODmin (mm)	ODmax (mm)				a (mm)	clamped	
							d approx. (mm)	H approx. (mm)
26.9	26.4	27.5	16	70	3	67	50	70
28.0	27.5	28.5	16	70	3	67	50	70
30.0	29.5	30.6	16	70	3	67	50	70
33.7	33.0	34.3	16	60	3	67	55	75
35.0	34.5	35.6	16	60	8	63	55	75
38.0	37.5	38.6	16	60	8	63	60	80
42.4	41.7	43.0	16	50	8	63	65	85
44.5	44.0	45.1	16	50	8	63	65	85
48.3	47.6	50.5	16	50	8	63	70	90
54.0	53.3	54.6	16	50	17	78	75	95
57.0	56.3	57.7	16	50	17	78	80	100
60.3	59.5	61.0	16	40	17	78	85	105
63.0	62.2	63.9	16	40	17	78	85	105
70.0	69.0	71.0	16	40	25	98	90	110
73.0	72.1	73.8	16	40	25	98	95	115
76.1	75.2	77.0	16	35	25	98	100	120
78.0	77.1	78.9	16	35	25	98	100	120
80.0	79.0	80.8	16	35	25	98	100	120
84.0	83.0	85.0	16	35	25	98	105	125
88.9	87.0	89.9	16	35	25	98	110	130
101.6	100.4	102.8	16	35	25	98	125	145
104.0	102.8	106.1	16	35	25	98	125	145
110.0	108.8	111.4	16	35	25	98	130	150
114.3	113.0	115.5	16	35	25	98	135	155
122.0	120.8	123.2	16	32	35	115	145	165
129.0	127.6	131.1	16	32	35	115	155	185
133.0	131.5	134.4	16	32	35	115	160	190
139.7	138.1	141.6	16	32	35	115	165	195
141.3	139.6	142.8	16	32	35	115	170	200
154.0	152.3	156.1	16	32	35	115	180	210
159.0	157.3	160.7	16	32	35	115	185	215
168.3	166.5	170.1	16	32	35	115	195	225

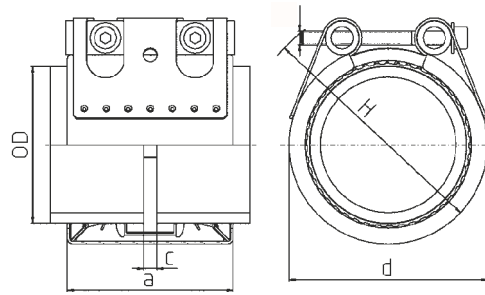
<sup>1)</sup> PN (nominal pressure) is the max. admissible working pressure in shipbuilding, based on a safety factor of  $\geq 4$ .

<sup>2)</sup> WP is the max. working pressure in industrial applications, based on a safety factor as per NORMA specification.

# NORMACONNECT® GRIP/GRIP E



NORMACONNECT® GRIP



NORMACONNECT® GRIP E

OD (mm)	Clamping range ODmin – ODmax (mm)	MAWP <sup>1)</sup> (bar)		WP <sup>2)</sup> (bar)		C <sub>max</sub> (mm)	Clamping range			
		GRIP	GRIP E	GRIP	GRIP E		a (mm)	d clamped approx. (mm)		H approx. (mm)
193.7	192.0 – 196.0	16.0	10.0	32.0	20.0	35	142	141	225	255
206.0	202.0 – 208.0	16.0	10.0	32.0	20.0	35	142	141	240	270
219.1	216.0 – 221.0	16.0	10.0	32.0	20.0	35	142	141	250	280
225.0	222.0 – 227.0	13.0	10.0	26.5	16.0	35	142	140	255	285
229.9	228.0 – 232.0	13.0	5.5	26.0	16.0	35	142	140	260	290
244.5	242.0 – 247.0	12.0	5.5	24.5	15.0	35	142	140	275	305
254.0	250.0 – 256.0	11.5	5.5	22.5	14.0	35	142	140	285	315
267.0	264.0 – 269.0	11.0	5.5	22.5	13.5	35	142	140	300	330
273.0	270.0 – 275.0	11.0	5.5	22.0	13.0	35	142	140	305	335
306.0	302.0 – 308.0	9.5	5.5	19.5	10.5	35	142	140	340	370
323.9	320.0 – 327.0	6.5	3.0	13.0	9.5	35	142	140	355	385
326.0	322.0 – 329.0	6.5	3.0	13.0	9.5	35	142	140	360	390
355.6	352.0 – 359.0	6.0	2.7	12.0	8.5	35	142	140	390	420
406.4	402.0 – 410.0	4.5	2.5	9.0	7.0	35	142	140	440	470
429.0	426.0 – 431.0	4.0	2.5	8.5	6.5	35	142	140	460	490
442.0	439.0 – 444.0	4.0	2.5	8.0	6.5	35	142	140	475	505
457.2	454.0 – 459.0	4.0	2.5	8.0	6.0	35	142	140	490	520
508.0	505.0 – 510.0	2.5	2.0	5.0	4.0	35	142	140	540	570
531.0	528.0 – 534.0	2.5	1.5	5.0	4.0	35	142	140	565	595
558.8	556.0 – 562.0	2.0	1.5	4.5	3.5	35	142	140	590	620
609.6	606.0 – 613.0	1.5	1.0	3.0	2.0	35	142	140	640	670
634.0	631.0 – 637.0	1.5	---	3.0	---	35	142	---	665	695
711.2	707.0 – 715.0	1.5	---	2.5	---	35	142	---	745	775

<sup>1)</sup> **MAWP** (maximum allowable working pressure) is the max. admissible working pressure in shipbuilding, based on a safety factor of  $\geq 4$ .

<sup>2)</sup> **WP** is the max working pressure in industrial applications, based on a safety factor as per NORMA specification.

For the pipes to be joined the max. difference in diameter must not exceed 5 mm.